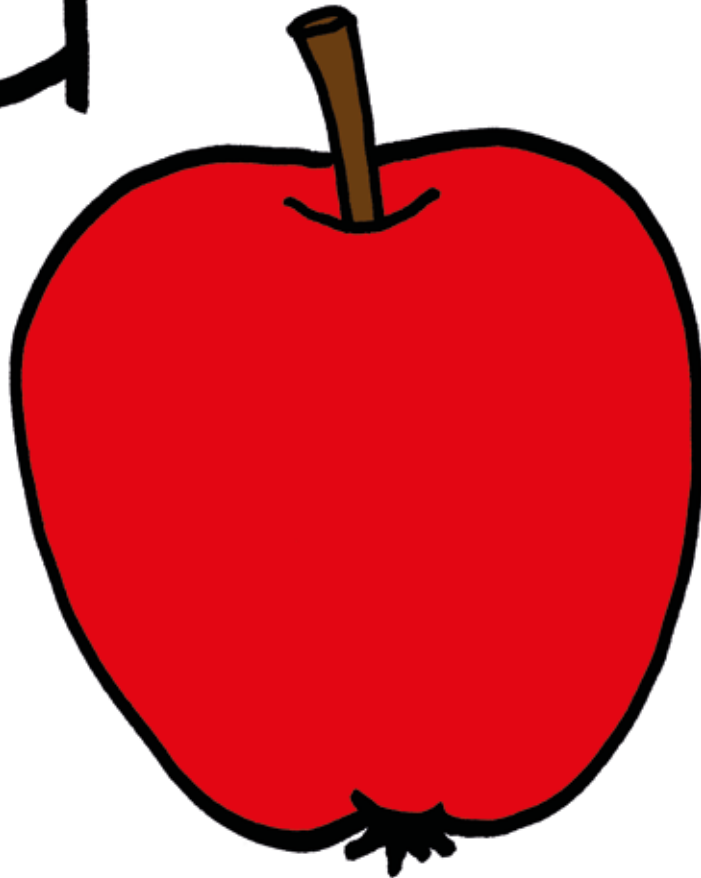
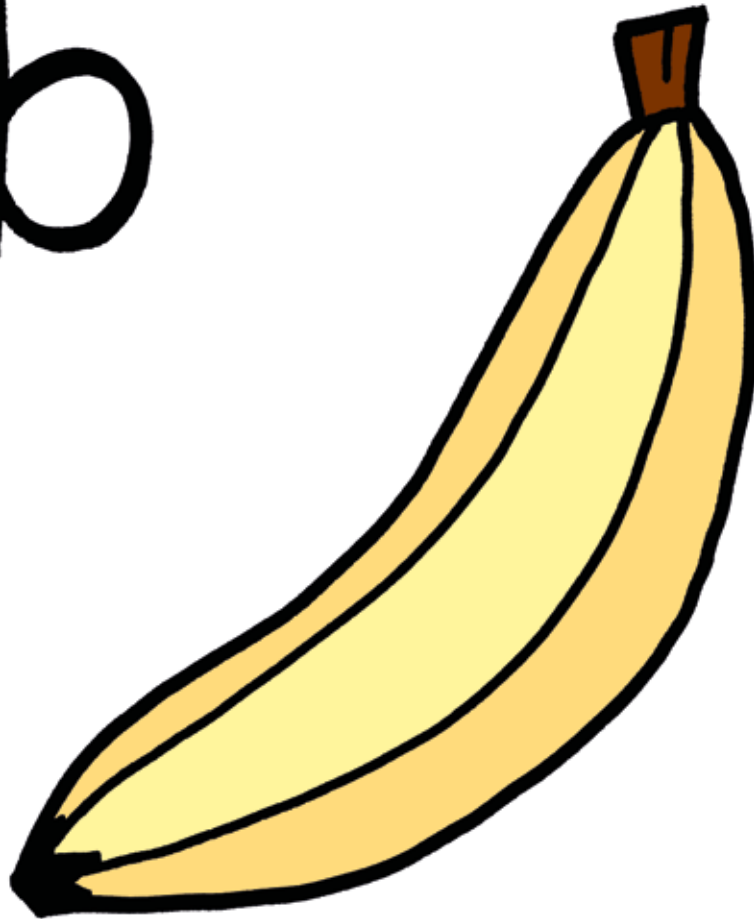


a



apple

b

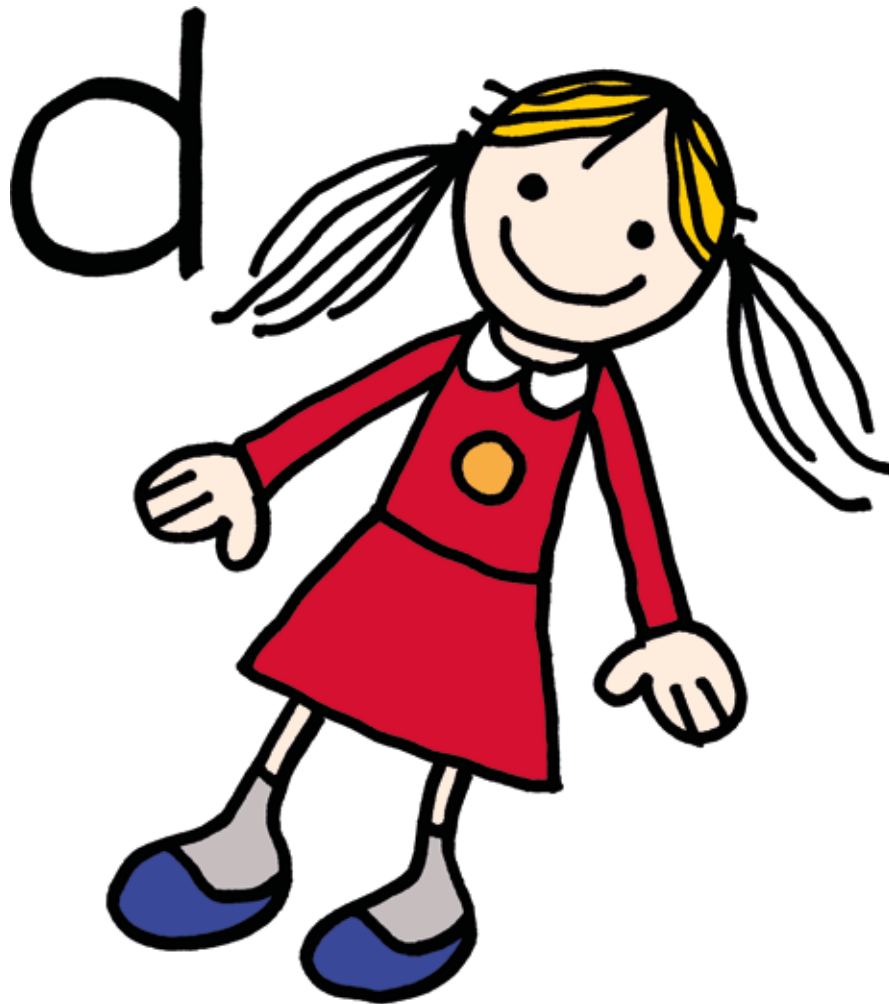


banana

C

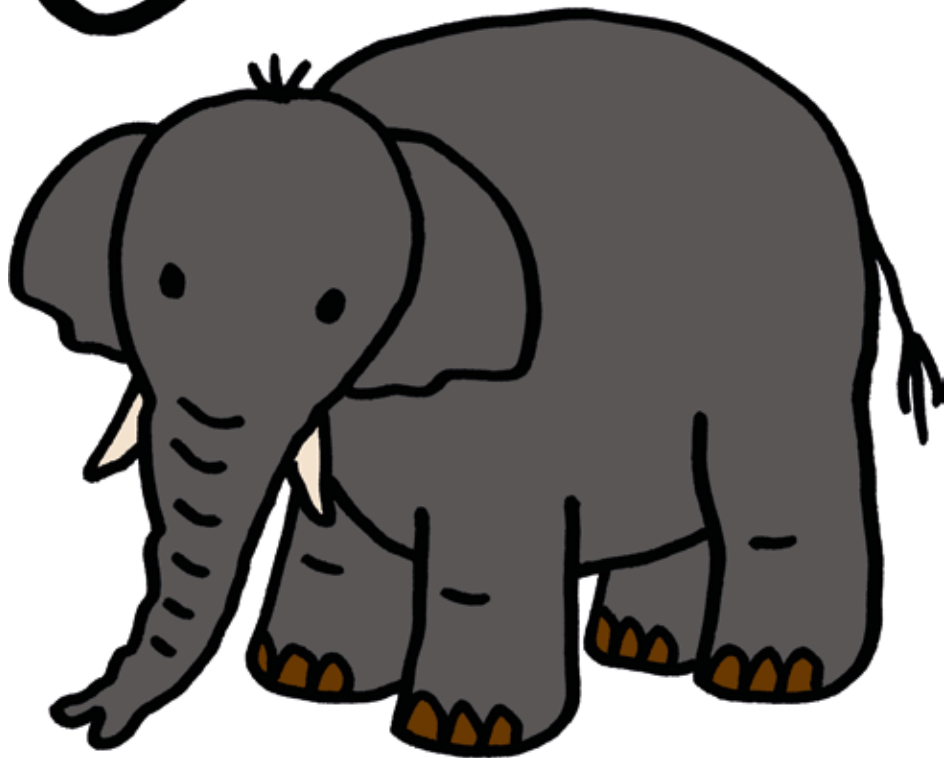


cake



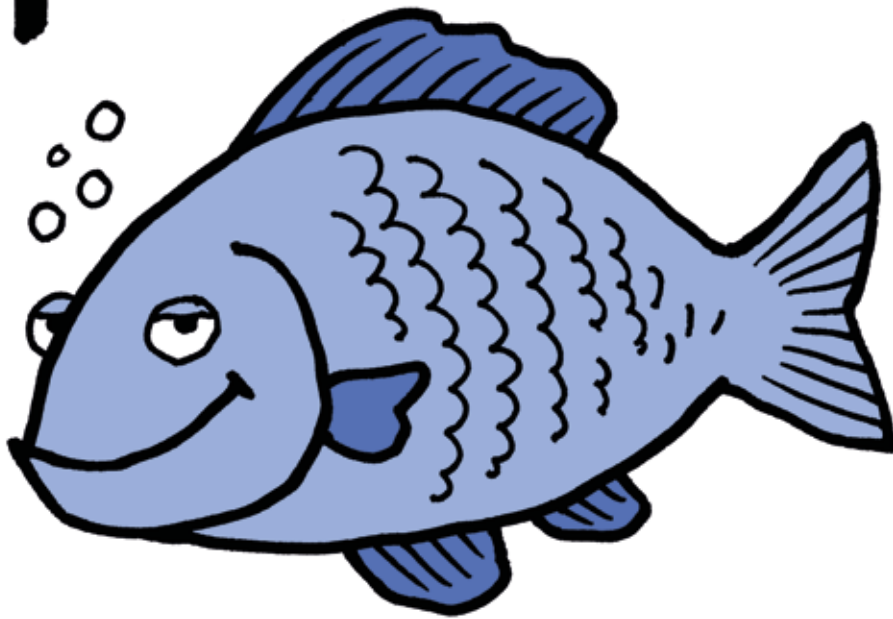
doll

e



elephant

f

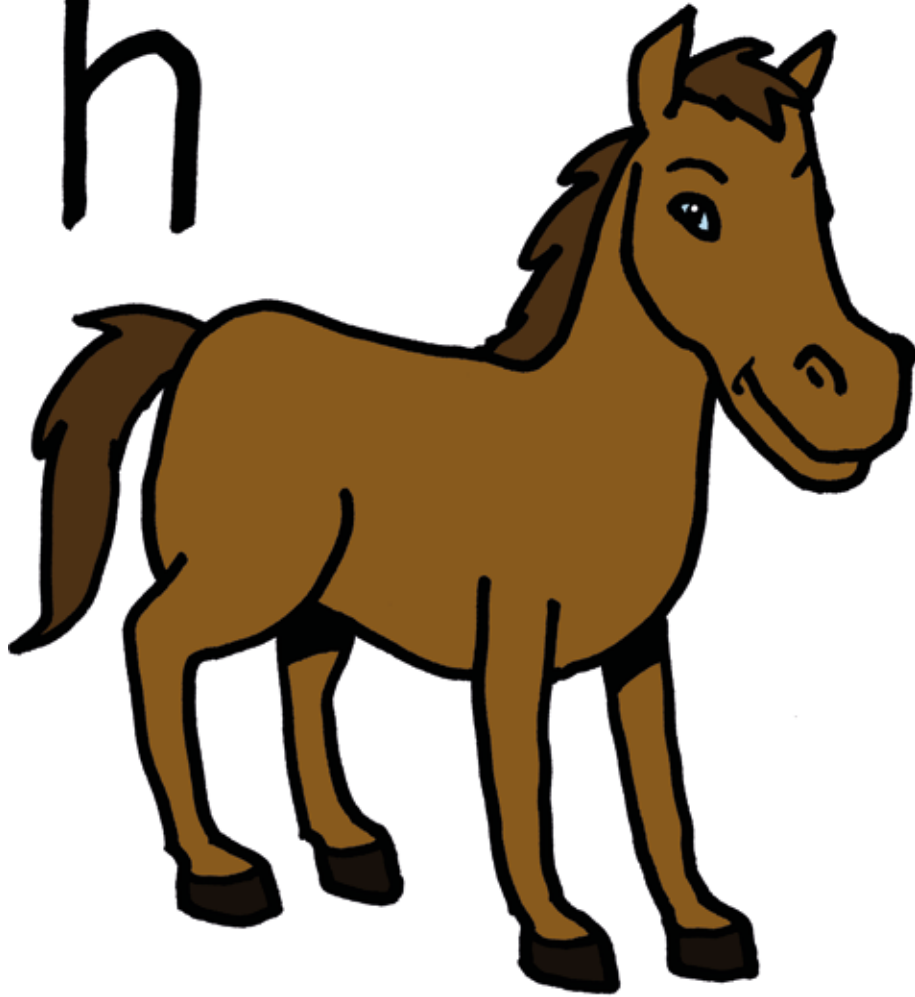


fish



ghost

h



horse



i



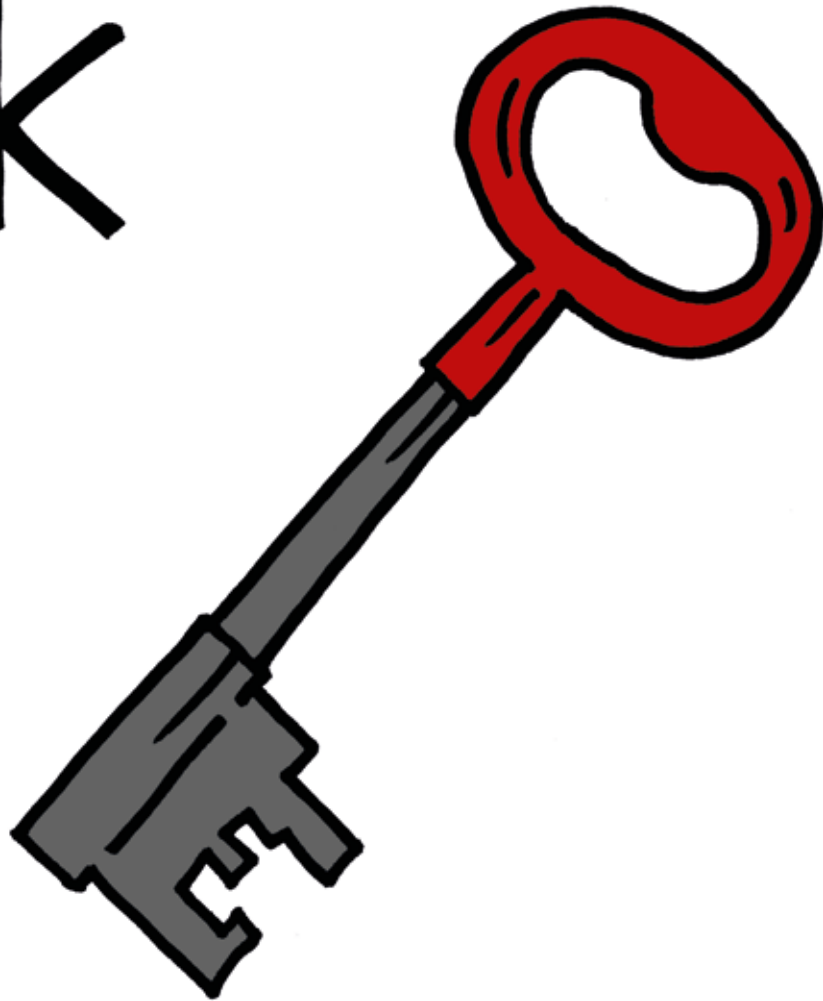
ice-cream

j

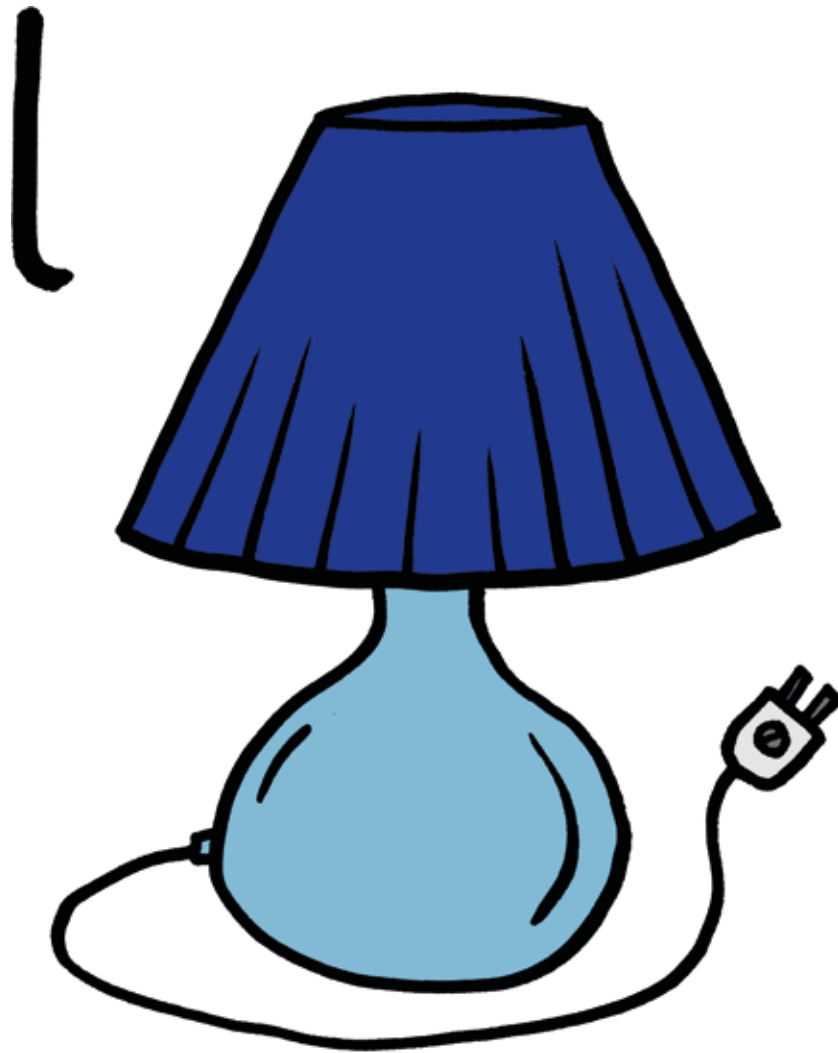


juice

K

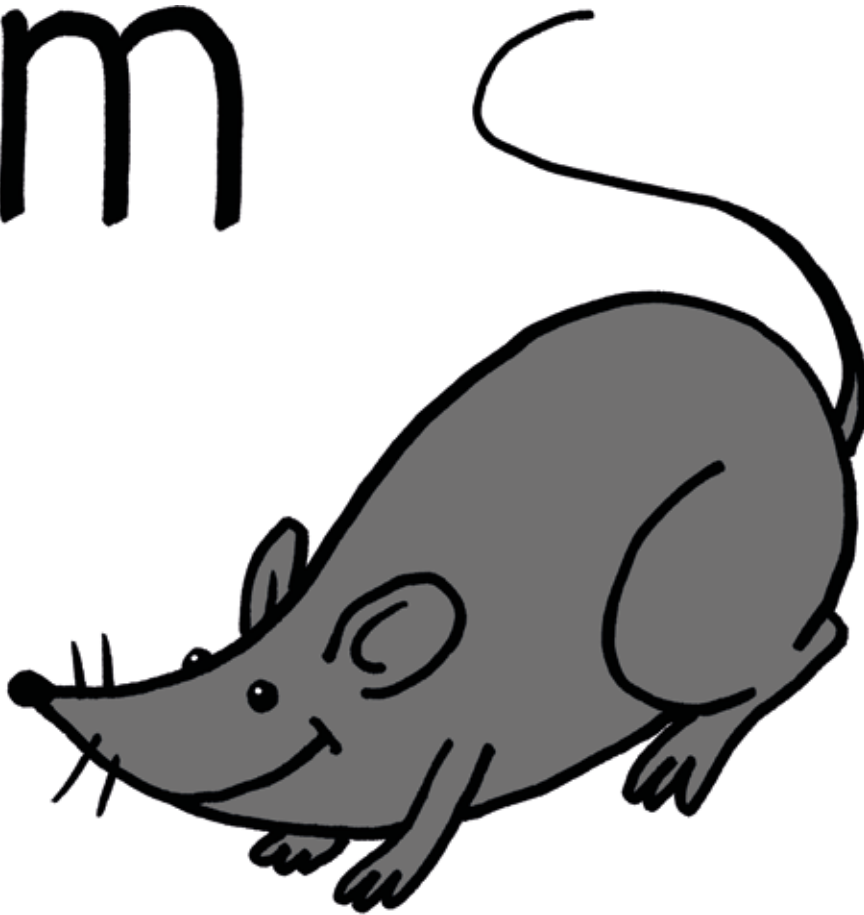


key



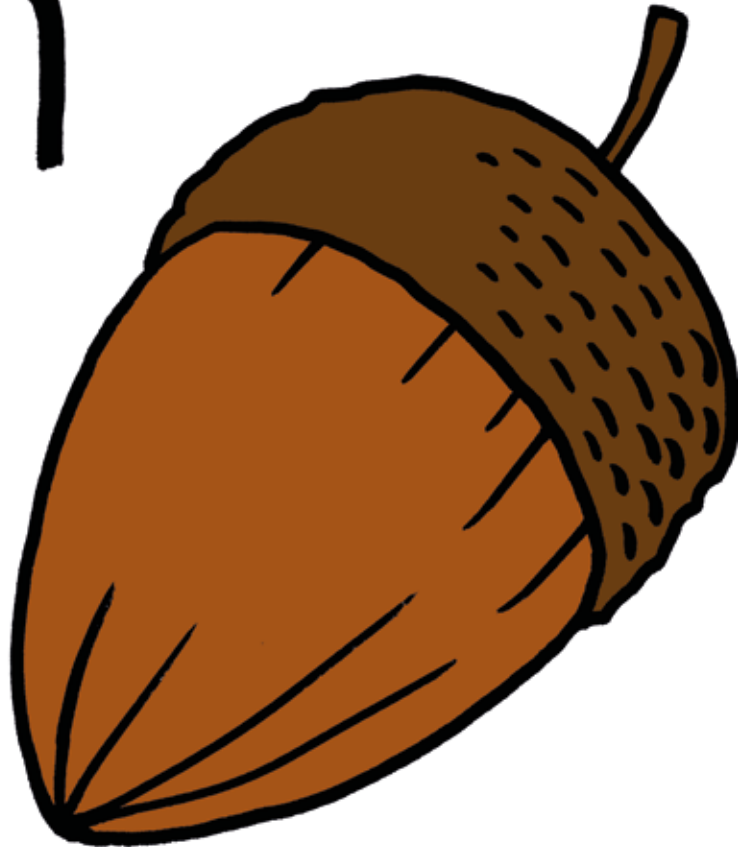
lamp

m

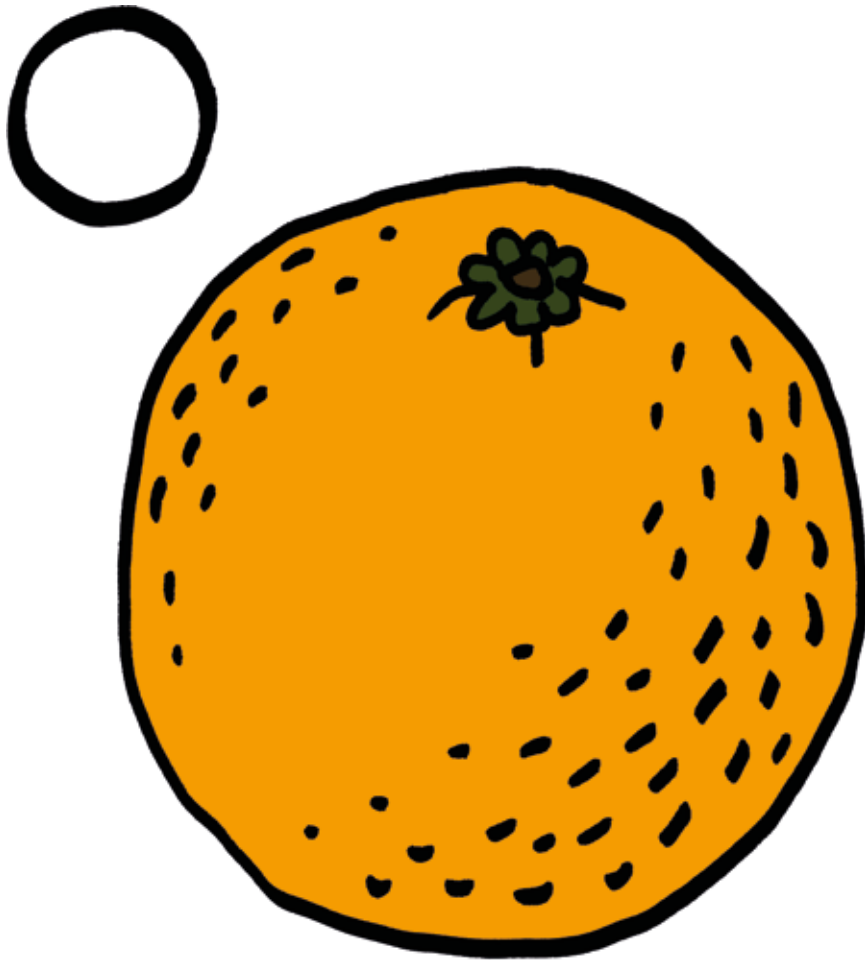


mouse

n



nut



orange

p



pencil





queen

r



rain



snake

t



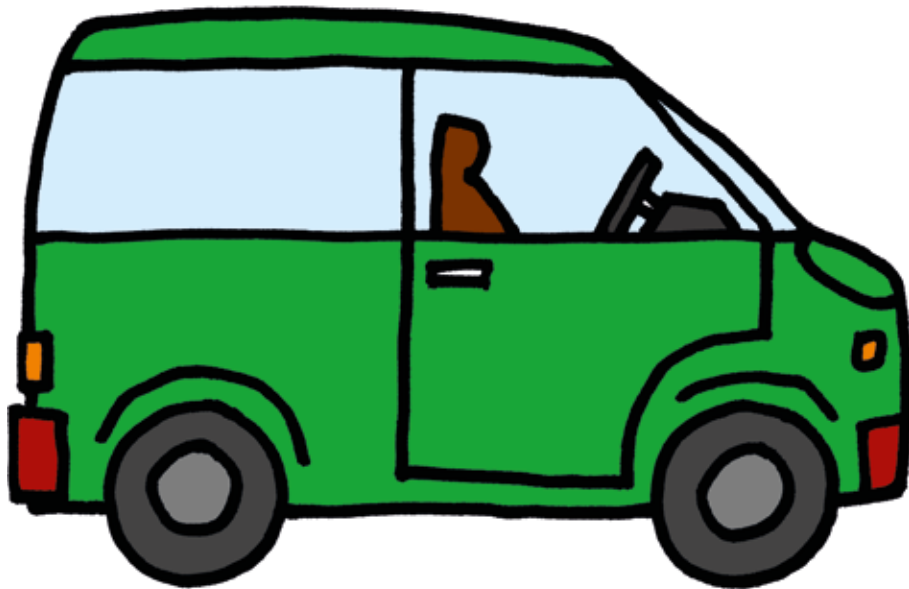
tea

u



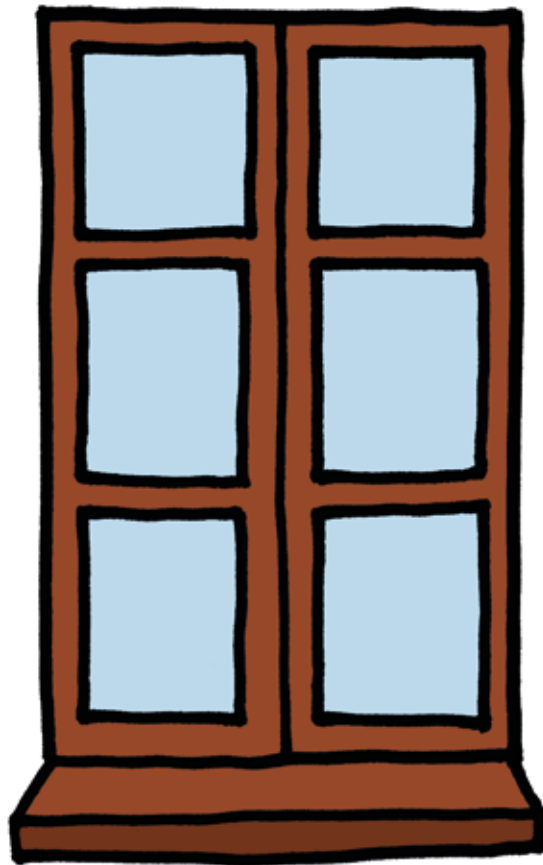
umbrella

v



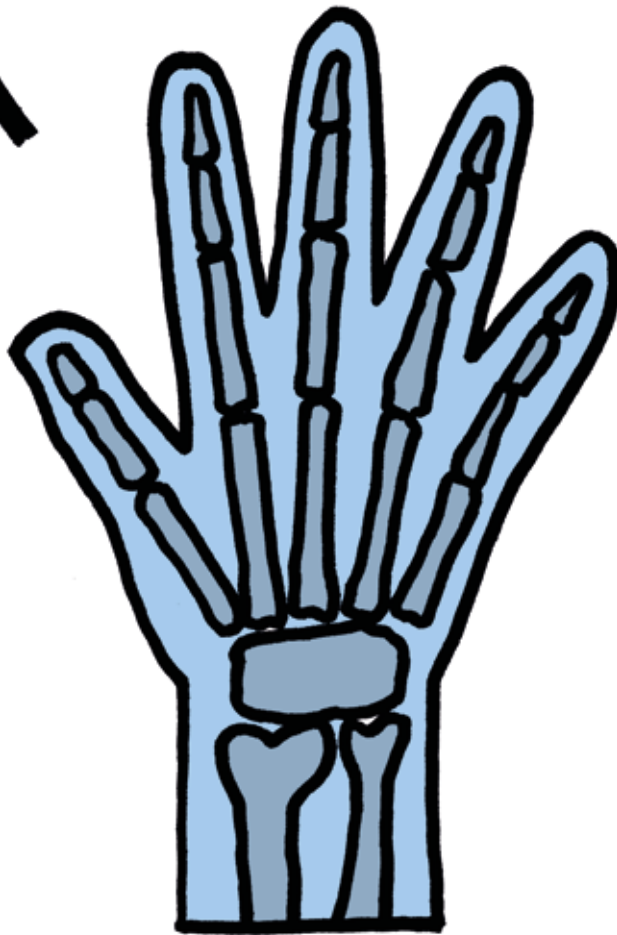
van

W



window

X



X-ray



y



yo-yo

Z



zebra